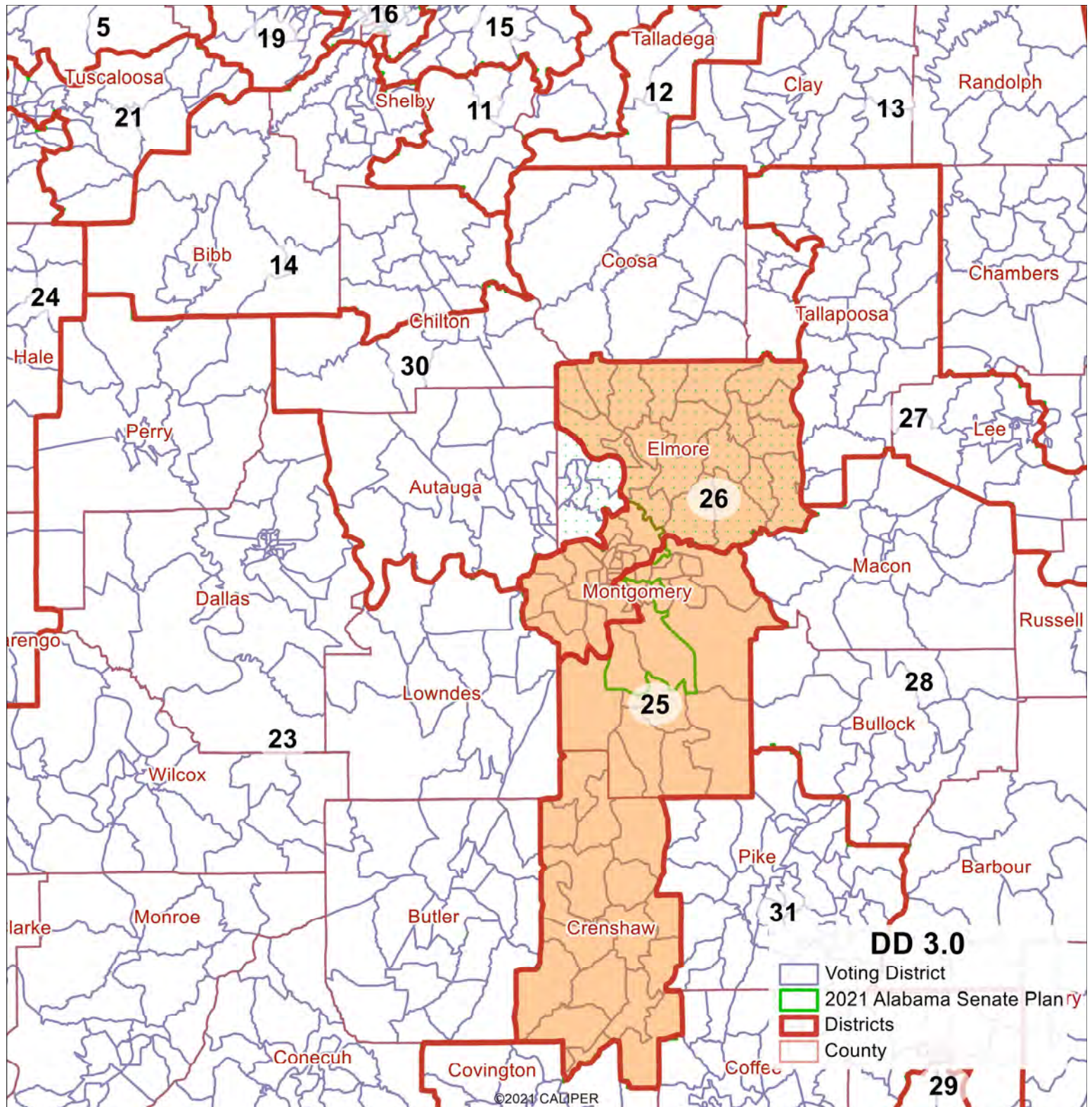


EXHIBIT 8



D.D. Plan 3.0

Plan Characteristics	D.D. Plan 3.0
Maximum Population Deviation	14,313
Contiguous	Yes
Core Retention (% Population in Same District as in Enacted Plan): Statewide	97.8%
County Splits (out of 67 counties)	19
Voting District Splits (out of 1,837 voting districts)	14
Municipality Splits (out of 462 municipalities)	84
Montgomery Split (% Population in District 25 / District 26)	55.1% / 44.9%
Compactness: Reock Score: Statewide	0.41
Compactness: Polsby-Popper Score: Statewide	0.26
Compactness: Population Polygon Score: Statewide	0.69
Compactness: Cut Edges: Statewide	8,788

District Characteristics	District 25	District 26
Total Population	148,125	148,125
Core Retention (compared to Enacted Plan)	63.3%	63.5%
Compactness: Reock Score	0.31	0.41
Compactness: Polsby-Popper Score	0.23	0.21
Compactness: Population Polygon Score	0.78	0.44
Black Voting Age Population	46.4%	48.5%

Election Performance Analysis – The percentage below is the margin of victory or defeat of the Black-preferred candidate (equal to the vote count for the Black-preferred candidate minus the vote count for the other top-vote getting candidate, divided by the total number of votes of those two candidates, excluding third-party or other votes). The average is a simple average (equally weighted) of all unique election contests without duplicates.

Election Contest	District 25		District 26	
	% Votes for BPC	Margin of Victory (or Defeat)	% Votes for BPC	Margin of Victory (or Defeat)
Eleven Biracial Elections				
2014 Auditor	44.8%	-10.3%	43.9%	-12.2%
2014 Lt. Governor	43.5%	-13.1%	55.4%	10.8%
2014 Secretary of State	42.5%	-15.0%	55.0%	9.9%
2018 Auditor	53.8%	7.5%	57.0%	14.0%
2018 Lt. Governor	51.6%	3.1%	55.9%	11.8%
2018 Pub. Serv. Commission (Place 1)	53.0%	5.9%	56.9%	13.8%
2022 Attorney General	47.9%	-4.2%	48.3%	-3.4%
2022 Governor	45.3%	-9.4%	47.4%	-5.2%
2022 Secretary of State	48.3%	-3.3%	48.9%	-2.2%
2022 Supreme Court Assoc. Justice	48.6%	-2.8%	48.8%	-2.4%
2022 U.S. Senate	47.2%	-5.7%	48.6%	-2.9%
Subtotal – Average	47.9%	-4.3%	51.5%	2.9%
Subtotal – Contests Won	3 of 11	-	5 of 11	-
Additional Elections				
2017 U.S. Senate	63.0%	26.1%	65.3%	30.5%
2018 Attorney General	54.8%	9.6%	58.3%	16.7%
2018 Governor	51.8%	3.7%	55.2%	10.4%
2018 Secretary of State	51.6%	3.2%	56.1%	12.1%
2020 President	53.4%	6.9%	56.3%	12.7%
2020 U.S. Senate	55.3%	10.7%	57.9%	15.8%
Total – Average	50.4%	0.8%	53.8%	7.7%
Total – Contests Won	9 of 17	-	11 of 17	-